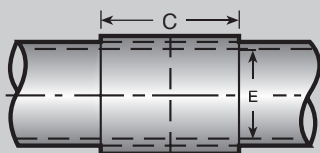
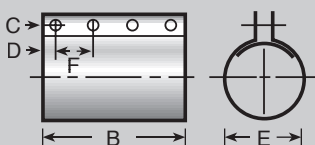


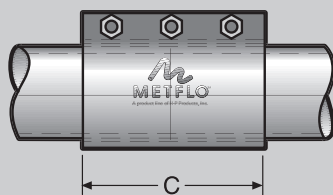
Expanded Fitting



Solid Sleeve



Clamp Sleeve



MetFlo™ Compression Coupling

Additional Sizes Available On Request.

Expanded Fitting

Zinc-Coated (Galvanized) Steel. This type of connection enables a straight section of tubing to slip inside the expanded end of the fitting. The two pieces can then be "locked" together by any one of several techniques - brazing, welding, industrial adhesive, or shrink sleeve. For use in low pressure (under 15 PSIG) systems.

Standard Solid Sleeves

Zinc-Coated (Galvanized) Steel. Can be used for joining any two straight ends of tubing or fittings. The solid sleeve is a slip coupling that fits the OD of the joint which can then be glued, brazed, welded, or covered by a shrink sleeve. For use in low pressure (under 15 PSIG) systems.

E ID	C LENGTH	GAUGE	PART NUMBER
2-1/4"	3-1/2"	20	29003
3"	4"	18	39003
4"	5"	16	49003
4-1/2"	5"	16	45003
6"	6"	16	69003
4"x7"	6"	16	79003

Clamp Sleeves or Compression Couplings

Zinc-Coated (Galvanized) Steel. Offers easy "tear down" function. Straight end tubing or fittings butt together within the ID of the coupling or sleeve, and the joint is mechanically locked simply by tightening the bolts which are included. For use in low pressure (under 15 PSIG) systems.

Standard Clamp Sleeves

Zinc-Coated (Galvanized) Steel. Bolt holes are 9/32". Nuts and bolts are inserted in sleeve. For use in low pressure (under 15 PSIG) systems.

E ID	B LENGTH	C NO. OF HOLES	D*	F**	GAUGE	PART NUMBER
2-1/4"	4"	3	1/2"	1-1/2"	20	CS-290
3"	4"	3	1/2"	1-1/2"	20	CS-390
4"	5"	4	1/4"	1-3/8"	20	CS-490
4-1/2"	5"	4	1/4"	1-3/8"	20	CS-450
6"	5-7/8"	4	5/16"	1-11/16"	18	CS-690
4"x7"	5-7/8"	4	5/16"	1-11/16"	16	CS-790

*DIMENSION D = DISTANCE CENTER OUTSIDE HOLE TO END ** DIMENSION F = DISTANCE BETWEEN CENTER OF HOLES

MetFlo™ Compression Couplings

Zinc-Coated (Galvanized) Steel. With black neoprene liner & stainless steel grounding strip. For use in low pressure (under 15 PSIG) systems.

FOR TUBE OD SIZE	NO. OF BOLTS	C LENGTH	PART NUMBER
2-1/4"	3	6"	22503B10
3"	3	6"	30003B10
4"	3	6"	40003B10
4-1/2"	3	6"	45003B10
6"	3	6"	60003B10
6"	4	8"	60004B10

KEY
PSIG = Pounds Per Sq. Inch In Gravity
ID = Inside Diameter
EXP = Expansion
OD = Outside Diameter



Shrink Sleeve

A heat shrinkable polyolefin band that literally shrinks and encircles the connection giving it mechanical strength and a positive seal. It can be used in conjunction with a solid sleeve or when using expanded fittings. Either way, gluing, brazing, and welding are eliminated. For use in low pressure (under 15 PSIG) systems.

Shrink Sleeves (4" Long)

FOR TUBE OD SIZE	PART NUMBER
2-1/4"	SS-212
3"	SS-300
4"	SS-400
4-1/2"	SS-450
5"	SS-500
6" & 4"x7"	SS-600

Protection Sleeves (18" Long)

A heat shrinkable polyethelene band that literally shrinks and encircles the joint. It is primarily used for underground joint protection. For use in low pressure (under 15 PSIG) systems.

FOR TUBE OD SIZE	PART NUMBER
2-1/4"	PS-212
3"	PS-300
4"	PS-400
4-1/2"	PS-450
5"	PS-500
6" & 4"x7"	PS-600

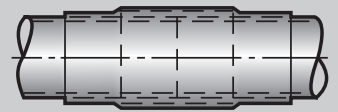
Standard Adapters (PVC to Metal)*

SIZE	C (LENGTH)	PART NUMBER
4-1/2"	2-1/2"	PMA-450
4.5"	2.5"	PMA-450

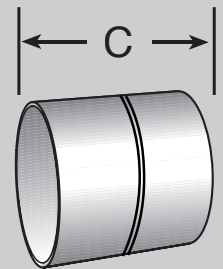
Instalok Couplings

Instalok couplings have a unique clamping design that offers un-paralleled strength and grip. Made with Grade 5 stress relieved bolts to ensure a trouble-free installation.

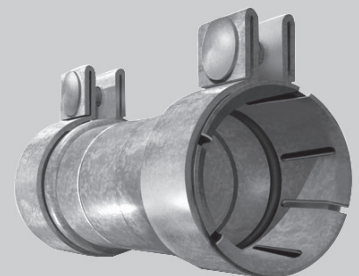
OD	O Ring	LENGTH	PART NUMBER
2-1/4"	Black	4"	CP22542B-16Z
2-1/4"	Black	6"	CP22562B-16Z
3"	Black	4"	CP30042B-16Z
3"	Black	6"	CP30062B-16Z
4"	Black	4"	CP40042B-16Z
4"	Black	6"	CP40062B-16Z
6"	Red	8"	CP60082S-16Z



Shrink Sleeve / Protective Sleeve



Adapter



Instalok Coupling
Additional Sizes
Available On Request.