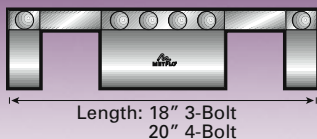


Eliminators

Bold Type Designates a Stock Item

Order by Product ID Number Only



Eliminator Specifications

The Eliminator, with its extra holding power, is ideal for higher pressure systems. Bands at either end of the Eliminator provide metal to metal "gripping" to eliminate end pull.

- 2" to 12" OD for Tube
- 2" to 12" NPS for Pipe
- Standard gasket is black neoprene

Kits are available to convert existing couplings into eliminators (see next section)

Other gaskets:

- White Nitrile
- Red Rubber
- Silicone
- EPDM
- Viton

Call for information!

SPECIAL SERVICES

- Shot Peening
- Spiral Grooving
- Porcelain Lining
- Ceramic Coating
- Part Variations



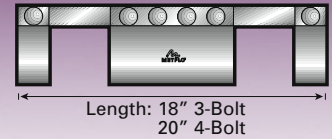
OD	NPS	LENGTH	BOLTS	GASKET	PRODUCT ID
2"		18"	3	Black Gasket	20003B10EL
2"		18"	3	White Gasket	20003W10EL
2-3/8"	2"	18"	3	Pipe Black Gasket	23753B10EL
2-3/8"	2"	18"	3	Pipe White Gasket	23753W10EL
2-1/2"		18"	3	Black Gasket	25003B10EL
2-1/2"		18"	3	White Gasket	25003W10EL
2-7/8"	2-1/2"	18"	3	Pipe Black Gasket	28753B10EL
2-7/8"	2-1/2"	18"	3	Pipe White Gasket	28753W10EL
3"		18"	3	Black Gasket	30003B10EL
3"		18"	3	White Gasket	30003W10EL
3"		20"	4	Black Gasket	30004B10EL
3"		20"	4	White Gasket	30004W10EL
3-1/2"	3"	18"	3	Tube/Pipe Black Gasket	35003B10EL
3-1/2"	3"	18"	3	Tube/Pipe White Gasket	35003W10EL
3-1/2"	3"	20"	4	Tube/Pipe Black Gasket	35004B10EL
3-1/2"	3"	20"	4	Tube/Pipe White Gasket	35004W10EL
4"	3-1/2"	18"	3	Black Gasket	40003B10EL
4"	3-1/2"	18"	3	White Gasket	40003W10EL
4"	3-1/2"	20"	4	Black Gasket	40004B10EL
4"	3-1/2"	20"	4	White Gasket	40004W10EL
4-1/2"	4"	18"	3	Pipe Black Gasket	45003B10EL
4-1/2"	4"	18"	3	Pipe White Gasket	45003W10EL
4-1/2"	4"	20"	4	Pipe Black Gasket	45004B10EL
4-1/2"	4"	20"	4	Pipe White Gasket	45004W10EL
5"		18"	3	5" Black Gasket	50003B10EL
5"		18"	3	5" White Gasket	50003W10EL
5"		20"	4	5" White Gasket	50004W10EL
5-9/16"	5"	18"	3	5" Pipe Black Gasket	55633B10EL
5-9/16"	5"	18"	3	5" Pipe White Gasket	55633W10EL
5-9/16"	5"	20"	4	5" Pipe Black Gasket	55634B10EL
5-9/16"	5"	20"	4	5" Pipe White Gasket	55634W10EL
6"		18"	3	Black Gasket	60003B10EL
6"		18"	3	White Gasket	60003W10EL
6"		20"	4	Black Gasket	60004B10EL
6"		20"	4	White Gasket	60004W10EL
6-5/8"	6"	18"	3	Pipe Black Gasket	66253B10EL
6-5/8"	6"	18"	3	Pipe White Gasket	66253W10EL
6-5/8"	6"	20"	4	Pipe Black Gasket	66254B10EL
6-5/8"	6"	20"	4	Pipe White Gasket	66254W10EL
8"		18"	3	Black Gasket	80003B10EL
8"		18"	3	White Gasket	80003W10EL
8"		20"	4	Black Gasket	80004B10EL
8"		20"	4	White Gasket	80004W10EL
8-5/8"	8"	18"	3	Pipe Black Gasket	86253B10EL

Eliminators

Bold Type Designates a Stock Item

Order by
Product ID Number Only

OD	NPS	LENGTH	BOLTS	GASKET	PRODUCT ID
8-5/8"	8"	18"	3	Pipe White Gasket	86253W10EL
8-5/8"	8"	20"	4	Pipe Black Gasket	86254B10EL
8-5/8"	8"	20"	4	Pipe White Gasket	86254W10EL
10"		18"	3	Black Gasket	100003B10EL
10"		18"	3	White Gasket	100003W10EL
10"		20"	4	Black Gasket	100004B10EL
10"		20"	4	White Gasket	100004W10EL
10-3/4"	10"	18"	3	Pipe Black Gasket	107503B10EL
10-3/4"	10"	18"	3	Pipe White Gasket	107503W10EL
10-3/4"	10"	20"	4	Pipe Black Gasket	107504B10EL
10-3/4"	10"	20"	4	Pipe White Gasket	107504W10EL
12"		18"	3	Black Gasket	120003B10EL
12"		18"	3	White Gasket	120003W10EL
12"		20"	4	White Gasket	120004W10EL
12"		20"	4	Black Gasket	120004B10EL
12-3/4"	12"	18"	3	Pipe Black Gasket	127503B10EL
12-3/4"	12"	18"	3	Pipe White Gasket	127503W10EL
12-3/4"	12"	20"	4	Pipe Black Gasket	127504B10EL
12-3/4"	12"	20"	4	Pipe White Gasket	127504W10EL



Eliminator Specifications

The Eliminator, with its extra holding power, is ideal for higher pressure systems. Bands at either end of the Eliminator provide metal to metal "gripping" to eliminate end pull.

- 2" to 12" OD for Tube
- 2" to 12" NPS for Pipe
- Standard gasket is black neoprene

Kits are available to convert existing couplings into eliminators

Other gaskets:

White Nitrile
Red Rubber
Silicone
EPDM
Viton

Call for information!

TERMINOLOGY

CLR = Center Line Radius
ERW = Electric Welded Resistance
FNPT = Female National Pipe Thread
ID = Inside Diameter
MNPT = Male National Pipe Thread
NPS = Nominal Pipe Size
OD = Outside Diameter
SCH = Schedule